

DS型单向阀

DS SERIES CHECK VALVES

符号 SYMBOL



DS型单向阀的作用是使油液只能向一方向流动，而另一个方向止流。

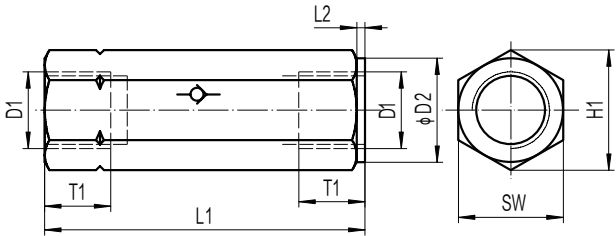
DS series check valves allow free flow in one direction and block flow in the counter direction

技术参数 Technical data

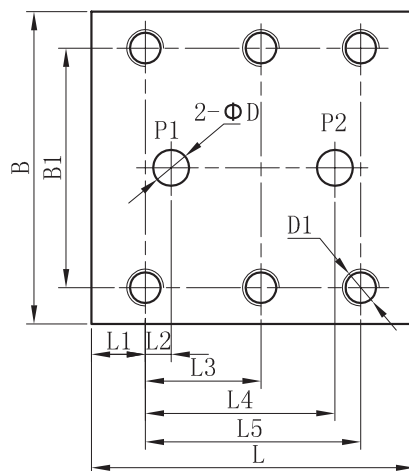
通径 Size		6	8	10	15	20	25	30
管式 Threaded connection	英制 Inch	G1/4"	G3/8"	G1/2"	G3/4"	G1"	G1 1/4"	G1 1/2"
	公制 Metric	M14X1.5	M18X1.5	M22X1.5	M27X2	M33X2	M42X2	M48X2
额定流量(L/min) Max .flow rate(L/min)		15	30	40	120	200	300	400
最高使用压力(MPa) Max .operating pressure(Mpa)		31.5						
六角对边(mm) Distance across flats(mm)		19	24	30	36	46	60	63
长度(mm) Length(mm)		58	58	72	85	98	120	132
重量(千克) Weight(KGS)		0.1	0.2	0.3	0.5	1	2.1	2.5
阀体（材料）表面处理 Valve body ( Material ) Surface treatment		钢件 表面发黑处理 Steel Body Surface Black Oxide						
油液清洁度/Oil cleanliness		NAS1638 9级和ISO4406 20/18/15级 NAS1638 class 9 and ISO4406 class 20/18/15						

管式安装尺寸 Threaded connection dimensions

通径 size	6	8	10	15	20	25	30
D1	G1/4 "	G3/8 "	G1/2 "	G3/4 "	G1 "	G1 1/4 "	G1 1/2 "
	M14x1.5	M18x1.5	M22x1.5	M27x2	M33x2	M42x2	M48x2
ΦD2	19	24	30	36	46	60	65
H1	21.5	27	34	40.5	53	69	75
L1	58	58	72	85	98	120	132
L2	1.5	1.5	1.5	1.5	1.5	1.5	1.5
T1	12	12	14	16	18	20	22
SW	19	24	30	36	46	60	65



板式安装尺寸 Subplate dimensions



通径 Size	B	B1	L	L1	L2	L3	L4	L5	D	D1
10	87	66.7	90	23.5	7.2	—	35.8	42.9	11	4-M10/20
20	110	79.4	120	23.4	11.1	—	49.2	60.3	22	4-M10/20
30	128	96.8	148	27.8	16.7	42.1	67.5	84.2	28	6-M10/20

DS	10	A	1	/	*	*
型号 Model 通径见表格 See the table for size A=管式; P=板式(只有10,20,30) A=Threaded connection P=Subplate mounting (only for size10,20,30)		For further details 附加说明 无=英制; 2 = 公制 No code=Inch thread;2=Metric 开启压力 Cracking pressure 1=0.05MPa; 2=0.15MPa 3=0.30MPa; 5=0.5 Mpa				